

Riduttori ad assi ortogonali

Bevel planetary helical gearboxes / Planeten-Kegelstirradgetriebe / Réducteurs à arbres cylindro-cônes / Reductores con ejes perpendiculares / Redutores de eixos ortogonais

	i_{eff}	$n_1 = 1500 \text{ min}^{-1}$			$n_1 = 1000 \text{ min}^{-1}$			$n_1 = 750 \text{ min}^{-1}$			$T_{2\text{ISO}}$ [Nm]	P_T [kW]
		n_2 [min^{-1}]	P_{N1} [kW]	T_{N2} [Nm]	n_2 [min^{-1}]	P_{N1} [kW]	T_{N2} [Nm]	n_2 [min^{-1}]	P_{N1} [kW]	T_{N2} [Nm]		
BPH 213 BPW 213	9.7	155	35.0	2100	104	26.7	2405	78	22.1	2650	3900	19
	11.4	132	35.0	2480	88	26.8	2840	66	22.1	3125	3530	
	13.7	109	32.5	2765	73	22.2	2835	55	17.0	2890	3130	
	17.0	88	21.6	2280	59	16.3	2575	44	13.1	2770	3180	
	20.0	75	21.6	2690	50	16.3	3040	37	13.1	3265	3530	
	24.1	62	19.1	2865	41	13.1	2940	31	10.0	2990	3130	
	27.5	55	13.4	2280	36	9.1	2340	27	7.0	2380	2730	
	33.1	45	13.4	2745	30	9.1	2815	23	7.0	2870	3130	
BPH 313 - BPW 313	35.3	42.5	17.3	3730	28.4	11.8	3830	21.3	9.0	3900	3900	18
	40.1	37.4	15.3	3760	24.9	10.5	3860	18.7	7.9	3900	3900	
	45.7	32.8	13.5	3790	21.9	9.3	3890	16.4	7.0	3900	3900	
	49.3	30.5	12.6	3810	20.3	8.6	3900	15.2	6.5	3900	3900	
	53.9	27.8	10.4	3430	18.5	7.1	3520	13.9	5.6	3680	3500	
	59.2	25.3	10.6	3850	16.9	7.2	3900	12.7	5.4	3900	3900	
	66.3	22.6	9.6	3880	15.1	6.4	3900	11.3	4.8	3900	3900	
	75.6	19.8	8.4	3900	13.2	5.6	3900	9.9	4.2	3900	3900	
	83.2	18.0	6.7	3410	12.0	4.6	3500	9.0	3.5	3560	3500	
	89.3	16.8	6.5	3570	11.2	4.6	3800	8.4	3.6	3900	3500	
	94.8	15.8	5.9	3440	10.5	4.0	3530	7.9	3.1	3590	3500	
	102.2	14.7	5.5	3460	9.8	3.8	3540	7.3	2.9	3610	3500	
	114.1	13.1	4.6	3190	8.8	3.2	3400	6.6	2.5	3550	3100	
	122.9	12.2	4.6	3500	8.1	3.2	3590	6.1	2.4	3650	3500	
	137.5	10.9	4.2	3520	7.3	2.9	3610	5.5	2.2	3680	3500	
	157.0	9.6	3.7	3550	6.4	2.5	3640	4.8	1.9	3710	3500	
	165.5	9.1	3.3	3380	6.0	2.4	3590	4.5	1.8	3750	3100	
	188.9	7.9	3.0	3450	5.3	2.1	3670	4.0	1.7	3830	3100	
	202.9	7.4	2.5	3070	4.9	1.7	3150	3.7	1.3	3200	3100	
	227.1	6.6	2.2	3090	4.4	1.5	3170	3.3	1.2	3230	3100	
259.2	5.8	2.0	3120	3.9	1.3	3200	2.9	1.0	3250	3100		
BPH 413 - BPW 413	128.7	11.7	5.0	3900	7.8	3.4	3900	5.8	2.5	3900	3900	17
	146.3	10.3	4.4	3900	6.8	3.0	3900	5.1	2.2	3900	3900	
	166.3	9.0	3.9	3900	6.0	2.6	3900	4.5	2.0	3900	3900	
	189.6	7.9	3.4	3900	5.3	2.3	3900	4.0	1.7	3900	3900	
	204.4	7.3	3.2	3900	4.9	2.1	3900	3.7	1.6	3900	3900	
	233.0	6.4	2.8	3900	4.3	1.9	3900	3.2	1.4	3900	3900	
	251.2	6.0	2.6	3900	4.0	1.7	3900	3.0	1.3	3900	3900	
	280.0	5.4	2.3	3900	3.6	1.5	3900	2.7	1.2	3900	3900	
	313.4	4.8	2.1	3900	3.2	1.4	3900	2.4	1.0	3900	3900	
	362.9	4.1	1.8	3900	2.8	1.2	3900	2.1	0.9	3900	3900	
	406.2	3.7	1.6	3900	2.5	1.1	3900	1.8	0.8	3900	3900	
	454.5	3.3	1.4	3900	2.2	1.0	3900	1.7	0.7	3900	3900	
	501.9	3.0	1.3	3900	2.0	0.9	3900	1.5	0.6	3900	3500	
	547.2	2.7	1.2	3900	1.8	0.8	3900	1.4	0.6	3900	3500	
	570.7	2.6	1.1	3900	1.8	0.8	3900	1.3	0.6	3900	3500	
	626.7	2.4	1.0	3900	1.6	0.7	3900	1.2	0.5	3900	3500	
	701.3	2.1	0.9	3900	1.4	0.6	3900	1.1	0.5	3900	3500	
	742.4	2.0	0.9	3900	1.3	0.6	3900	1.0	0.4	3900	3500	
	800.5	1.9	0.8	3900	1.2	0.5	3900	0.9	0.4	3900	3500	
	943.3	1.6	0.7	3900	1.1	0.5	3900	0.8	0.3	3900	3500	
	962.1	1.6	0.7	3900	1.0	0.4	3900	0.8	0.3	3900	3500	
	1076.7	1.4	0.6	3900	0.9	0.4	3900	0.7	0.3	3900	3500	
	1229.0	1.2	0.5	3900	0.8	0.4	3900	0.6	0.3	3900	3500	
	1392.0	1.1	0.4	3740	0.7	0.3	3900	0.5	0.2	3900	3100	
	1479.3	1.0	0.4	3900	0.7	0.3	3900	0.5	0.2	3900	3100	
	1588.8	0.9	0.4	3820	0.6	0.3	3900	0.5	0.2	3900	3100	
	1778.0	0.8	0.4	3880	0.6	0.2	3900	0.4	0.2	3900	3100	
	2029.4	0.7	0.3	3900	0.5	0.2	3900	0.4	0.2	3900	3100	

Rapporti superiori sono possibili. Contattare il ns. Servizio Tecnico Commerciale per eventuali richieste

Higher ratios are available. Contact our Technical Service for possible questions

Höhere Übersetzungen sind möglich, Kontaktieren Sie unseren technischen Vertriebsservice für Ihre Anfragen

Rapports supérieurs possibles, contacter notre service technico-commercial pour toute information

Una relación superior es posible. Solicitar información a nuestro Servicio Técnico Comercial

Relações superiores podem ser disponíveis. Entre em contato com o nosso Serviço Técnico Comercial para obter informações

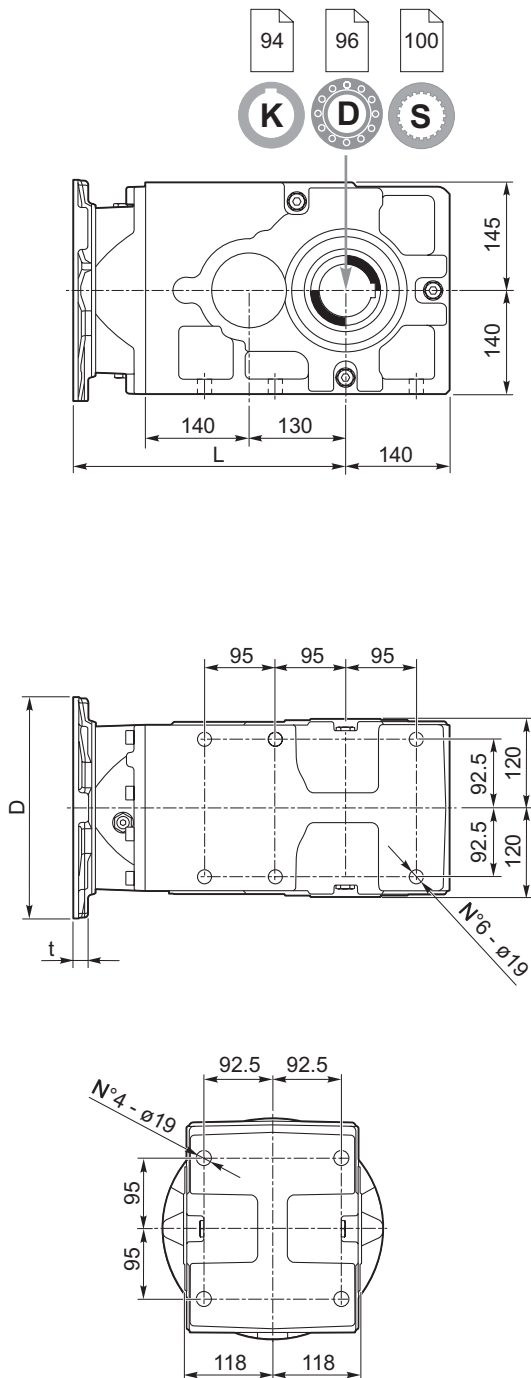


BPH.13

Riduttori ad assi ortogonali

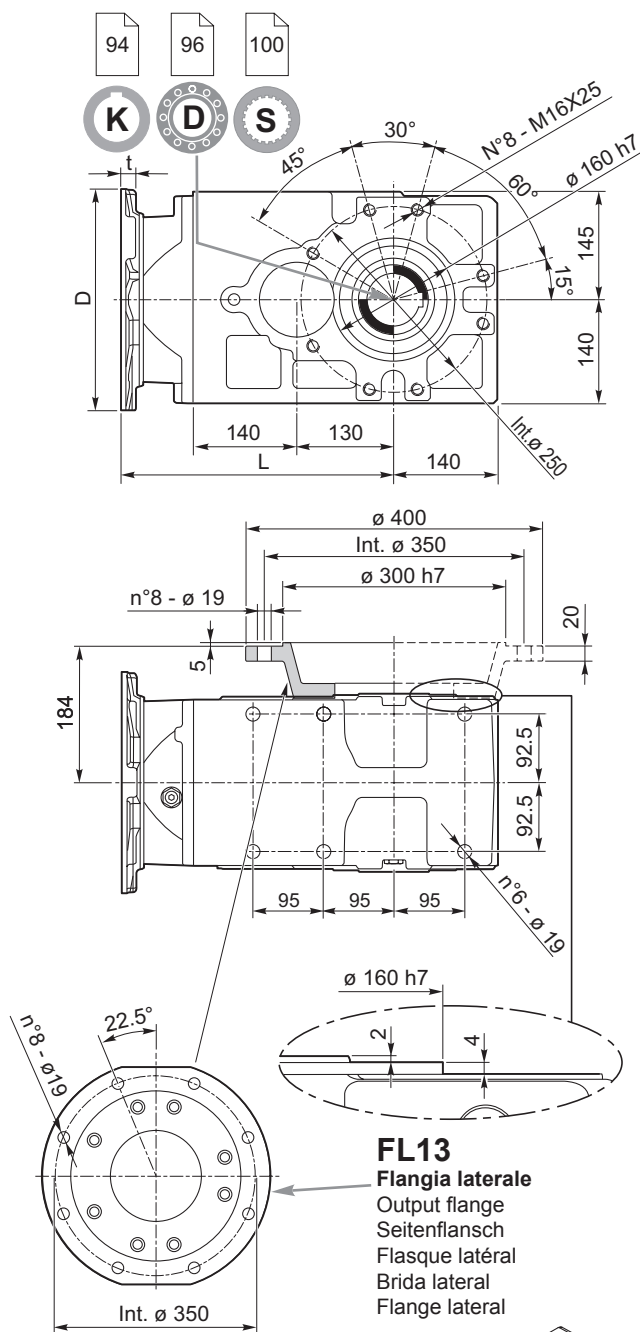
Bevel planetary helical gearboxes / Planeten-Kegelstirnradgetriebe / Réducteurs à arbres cylindro-côniques / Reductores con ejes perpendiculares / Redutores de eixos ortogonais

BPH.13

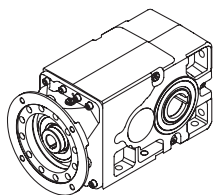


BPH.13F

Predisposto per flangia laterale / Arranged for output flange
Für Seitenflansch ausgelegt / Adapté pour flasque latéral
Preparado para brida lateral / Predisposto para flange lateral



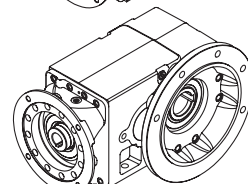
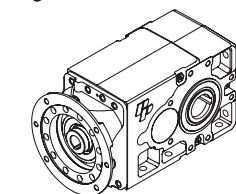
FL13
Flangia laterale
Output flange
Seitenflansch
Flasque latéral
Brida lateral
Flange lateral



Predisposizioni IEC / IEC Adaptor / IEC-Motorlaterne
Prédisposition IEC / Predisposición para el motor IEC / Adaptador IEC

	INPUT 00	71	80 - 90	100 - 112	132	160	180	
	—	160	200	250	300	350	350	D
	—	*	*	15	16	20	20	t
BPH 213	356.0	—	—	—	367.0	387.0	387.0	L
BPH 313	421.5	—	448.5	449.5	465.5	498.0	—	
BPH 413	481.5	503.5	508.5	509.5	525.5	—	—	

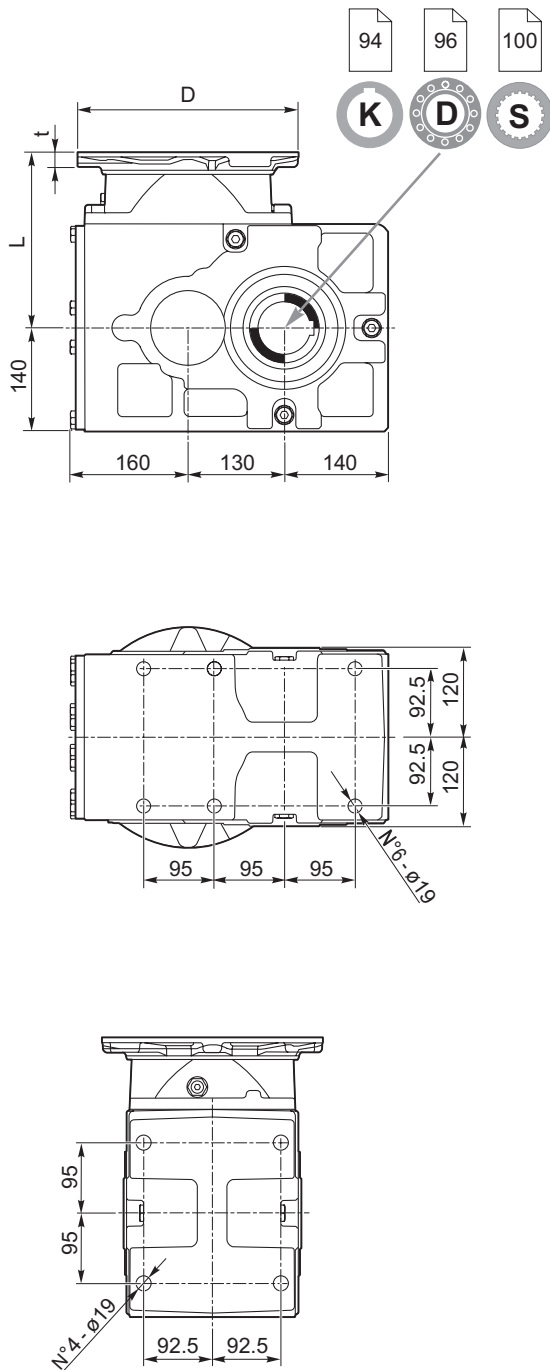
* Fori filettati nella flangia motore / Threaded holes on motor flange / Gewindebohrungen Motorlaterne
Trous filetés sur la lanterne moteur / Orificios roscados en la brida del motor / Furos rosqueados no flange do motor



Riduttori ad assi ortogonali

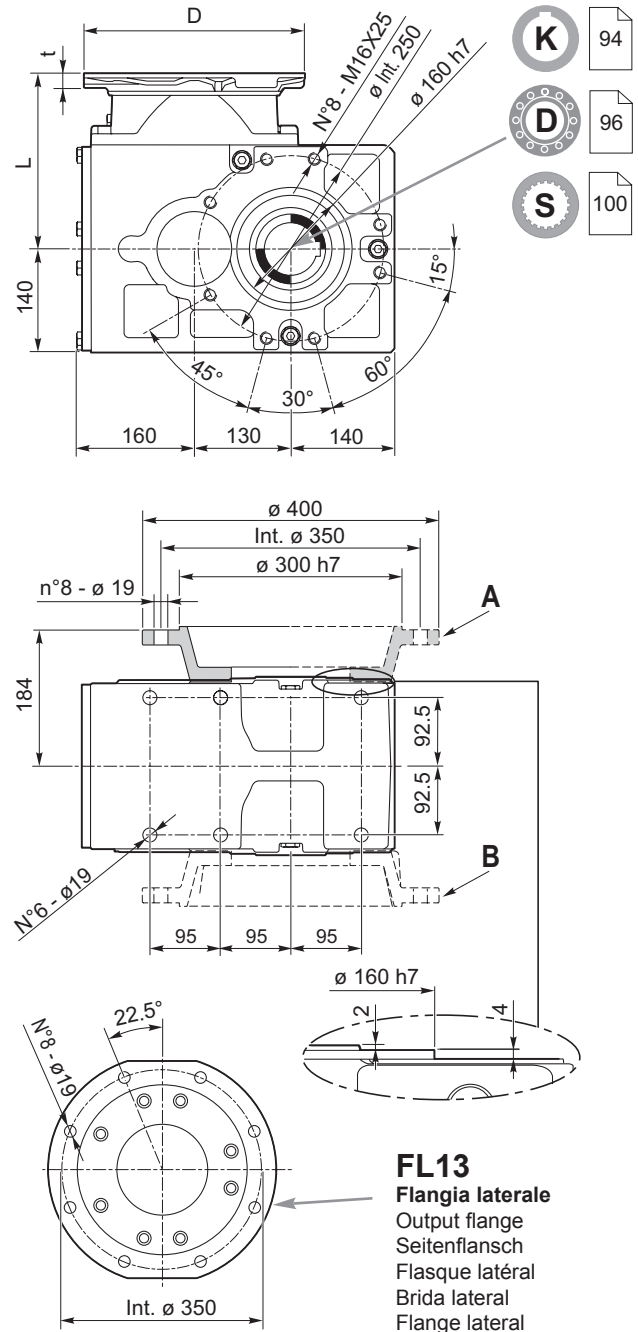
Bevel planetary helical gearboxes / Planeten-Kegelstirradgetriebe / Réducteurs à arbres cylindro-cônes / Reductores con ejes perpendiculares / Redutores de eixos ortogonais

BPW.13

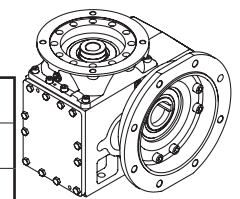
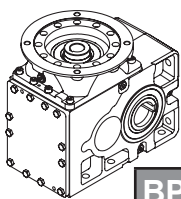


BPW.13F

Predisposto per flangia laterale / Arranged for output flange
Für Seitenflansch ausgelegt / Adapté pour flasque latéral
Preparado para brida lateral / Predisposto para flange lateral



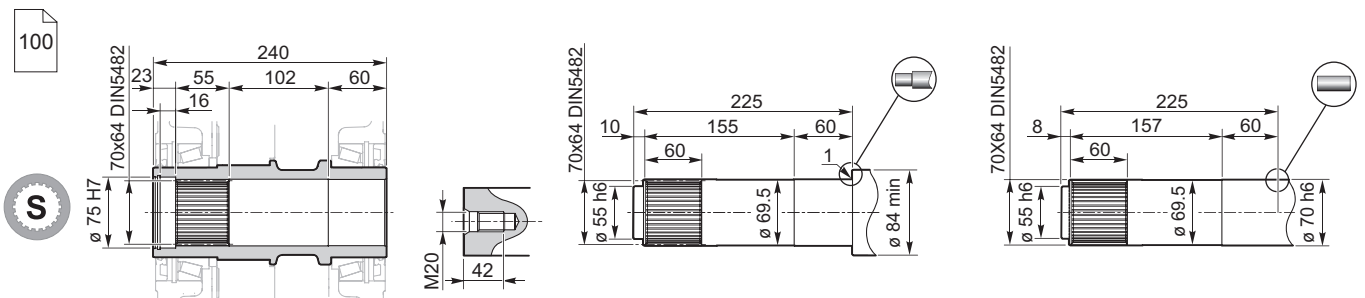
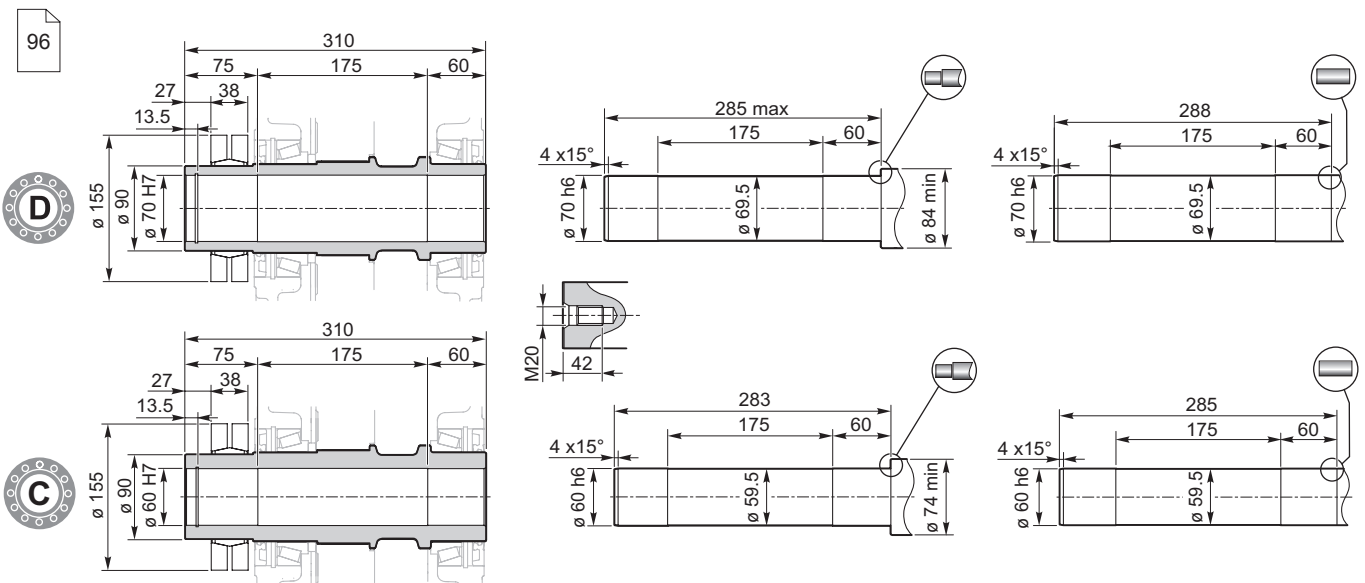
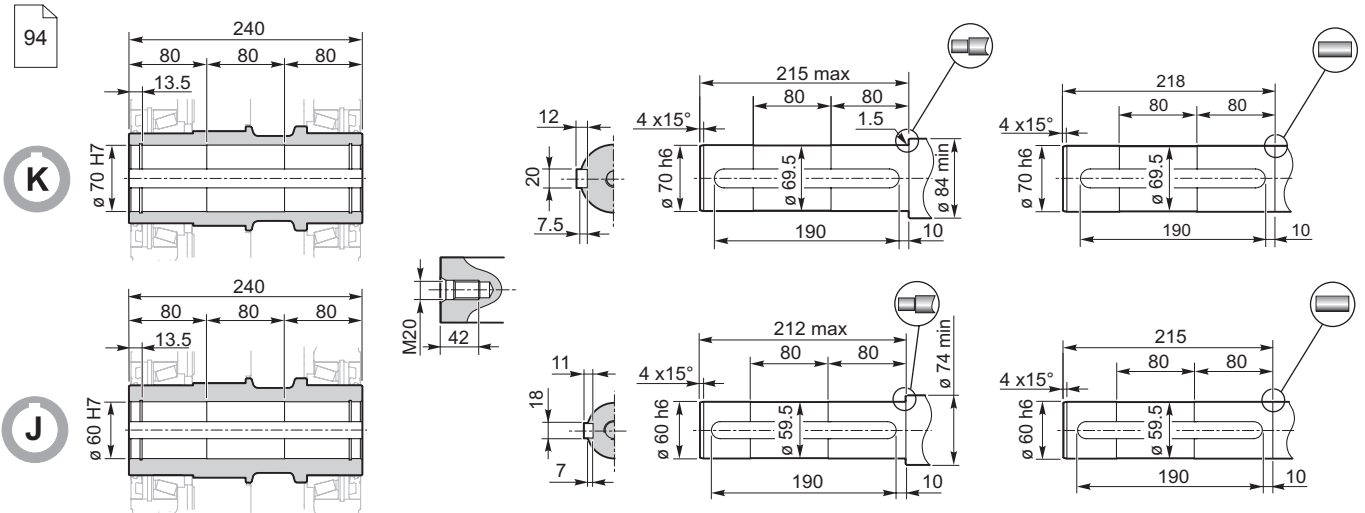
FL13
Flangia laterale
Output flange
Seitenflansch
Flasque latéral
Brida lateral
Flange lateral



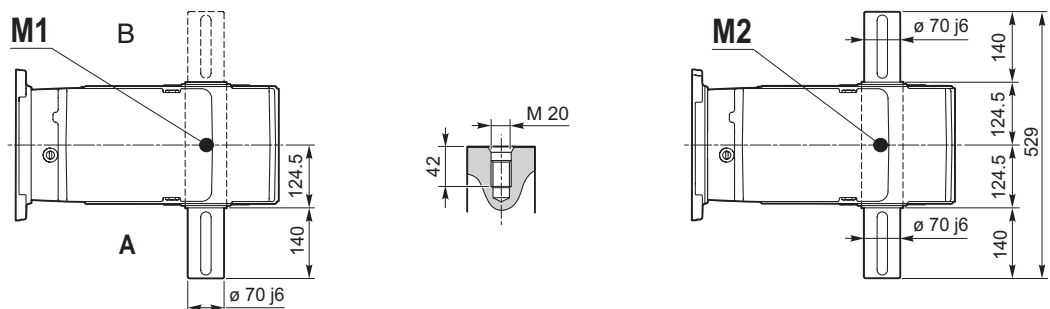
Predisposizioni IEC / IEC Adaptor / IEC-Motorlaterne
Prédisposition IEC / Predisposición para el motor IEC / Adaptador IEC

	INPUT 00	71	80 - 90	100 - 112	132	160	180	
	—	160	200	250	300	350	350	D
	—	*	*	15	16	20	20	t
BPW 213	226.0	—	—	—	237.0	257.0	257.0	L
BPW 313	291.5	—	318.5	319.5	335.5	368.0	—	
BPW 413	351.5	373.5	378.5	379.5	395.5	—	—	

* Fori filettati nella flangia motore / Threaded holes on motor flange / Gewindebohrungen Motorlaterne
Trous filetés sur la lanterne moteur / Orificios roscados en la brida del motor / Furos rosqueados no flange do motor



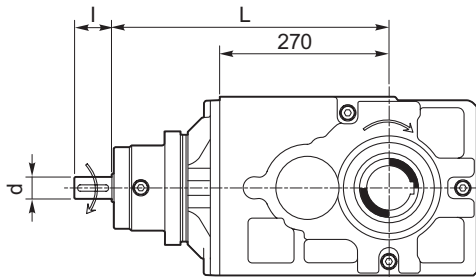
Albero maschio in uscita / Output male shaft / Abtriebswellenstumpf
Arbre mâle en sortie / Eje macho de salida / Eixo macho na saída



Riduttori ad assi ortogonali

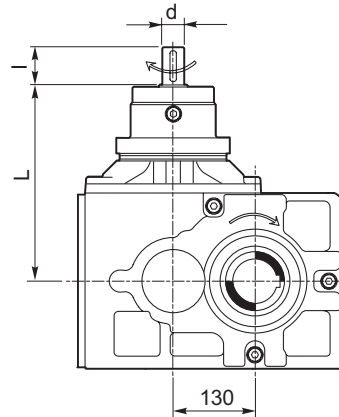
Bevel planetary helical gearboxes / Planeten-Kegelstirradgetriebe / Réducteurs à arbres cylindro-côniques / Reductores con ejes perpendiculares / Redutores de eixos ortogonais

BPH.13../M



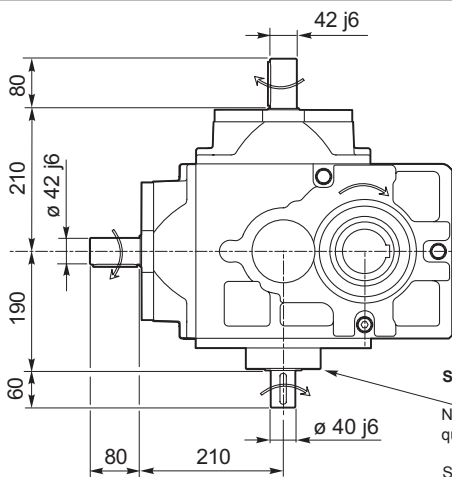
	L	l	d
BPH 213	358	80	42 j6
BPH 313	441.5	60	35 j6
BPH 413	501.5	60	35 j6

BPW.13../M

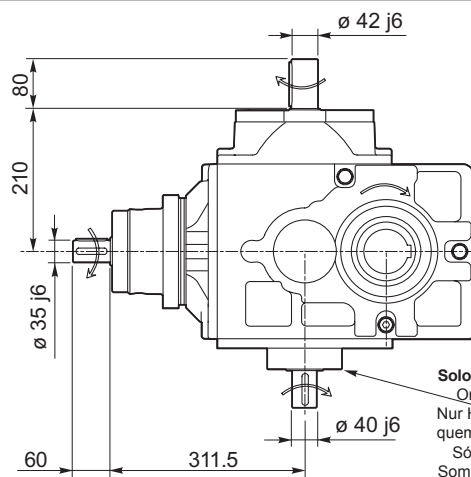


	L	l	d
BPW 213	210	80	42 j6
BPW 313	311.5	60	35 j6
BPW 413	371.5	60	35 j6

Multialbero / Multishaft / Mehrwellen Multiarbres / Multieje / Multieixo

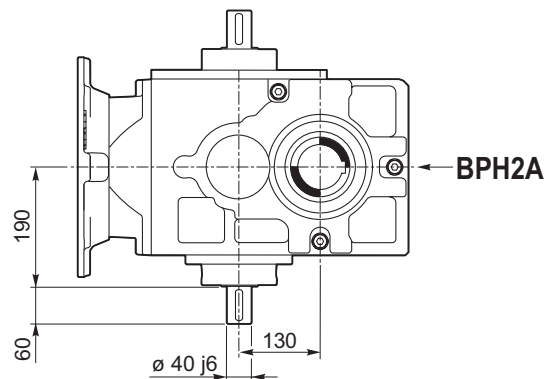
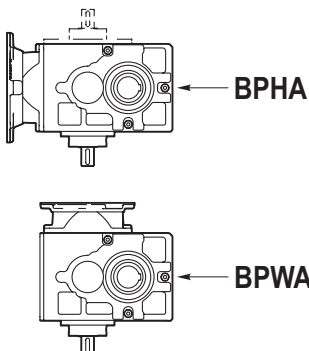


Solo ingresso/uscita ausiliario
Only auxiliary input/output
Nur Hilfseingang/-ausgang
Uniquement entrée/sortie auxiliaire
Sólo entrada/salida auxiliar
Somente entrada/saída auxiliar



Solo ingresso/uscita ausiliario
Only auxiliary input/output
Nur Hilfseingang/-ausgang
Uniquement entrée/sortie auxiliaire
Sólo entrada/salida auxiliar
Somente entrada/saída auxiliar

Doppio ingresso / Double input / Doppelter Eingang Double entrée / Entrada doble / Entrada dupla



N.B.

Per i disegni relativi ai riduttori multialbero contattare il nostro reparto tecnico.

For multishaft gearbox contact our technical service for specific drawing

Für Fragen zu den Zeichnungen der Mehrwellengetriebe setzen Sie sich mit unserem technischen Büro in Verbindung

Pour les dessins concernant les réducteurs multiarbres, contacter notre service technique

Para los dibujos de los reductores multieje, consultar con nuestro departamento técnico.

Para os desenhos relativos aos redutores multieixo, entrar em contato com nosso Serviço Técnico

Riduttori ad assi ortogonali

Bevel planetary helical gearboxes / Planeten-Kegelstirradgetriebe / Réducteurs à arbres cylindro-côniques / Reductores con ejes perpendiculares / Redutores de eixos ortogonais

Posizioni di montaggio / Mounting position / Einbaulage

Positions de montage / Posiciones de montaje / Posição de montagem

BPH13K	B31 	B81 	B61 	B62 	B72 	B71 	V51 	V52
	B32 	B82 						
BPH13KD/S + FL13	B3 	B8 	B6 		B7 		V51 	V52
BPH13D/S	B31 	B81 	B61 	B62 	B72 	B71 	V511 	V521
	B32 	B82 						V512
BPW13K	B3 	B81 	B61 	B62 	B72 	B71 	V51 	V52
		B82 						
BPW13K/D/S + FL13	B3 	B8 	B6 		B7 		V51 	V52
BPW13D/S	B31 	B81 	B61 	B62 	B72 	B71 	V511 	V521
	B32 	B82 						V512

Per posizioni di montaggio diverse da quelle sopra rappresentate, contattare il nostro ufficio tecnico

For assembly positions other than those presented above, contact our technical office

Für andere, von den oben angegebenen unterschiedliche Montagepositionen setze man sich mit unserem technischen Büro in Verbindung

Pour les positions de montage différentes des positions susmentionnées, contacter notre bureau technique

En caso de posiciones de montaje distintas de las arriba descritas, contactar con nuestro departamento técnico

Para obter posições de montagem diferentes das apresentadas acima, consultar nosso escritório técnico

