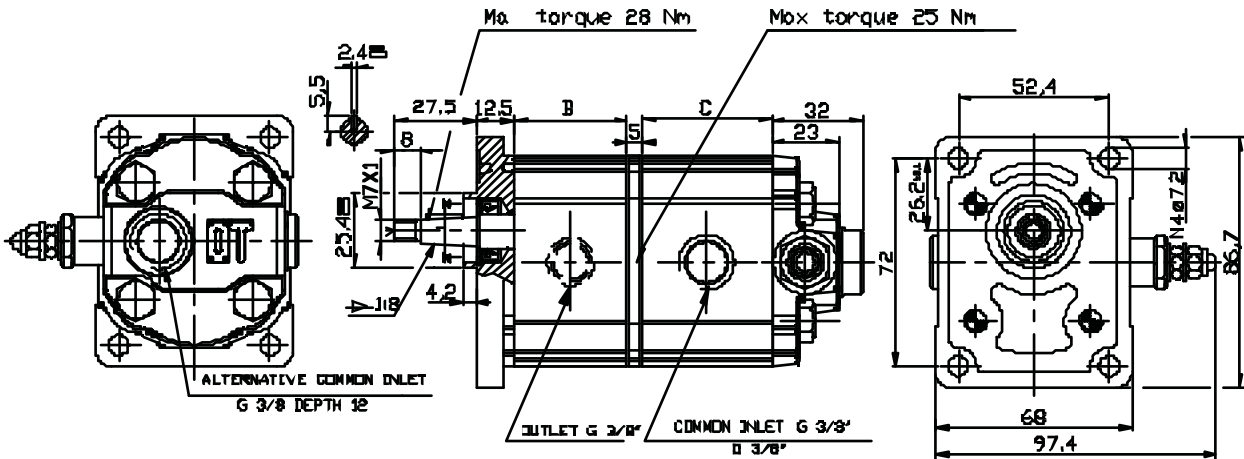


GROUP 1 PUMPS- TANDEM WITH SEQUENCE VALVE HI-LOW

VERSION: G18 P1-SV

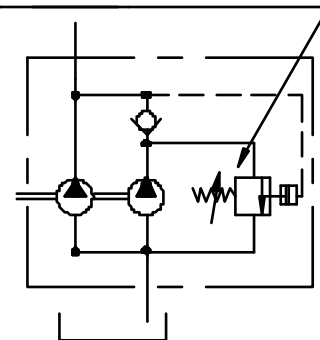


FRONT PUMP				
TIPO	P1	P3	B	Cy
OT 100 P11	240	280	37.8	1.05
OT 100 P16	260	300	39.5	1.45
OT 100 P20	260	300	40.9	1.80
OT 100 P26	260	300	43	2.45
OT 100 P32	260	300	40.9	3.05
OT 100 P40	260	300	43	3.80

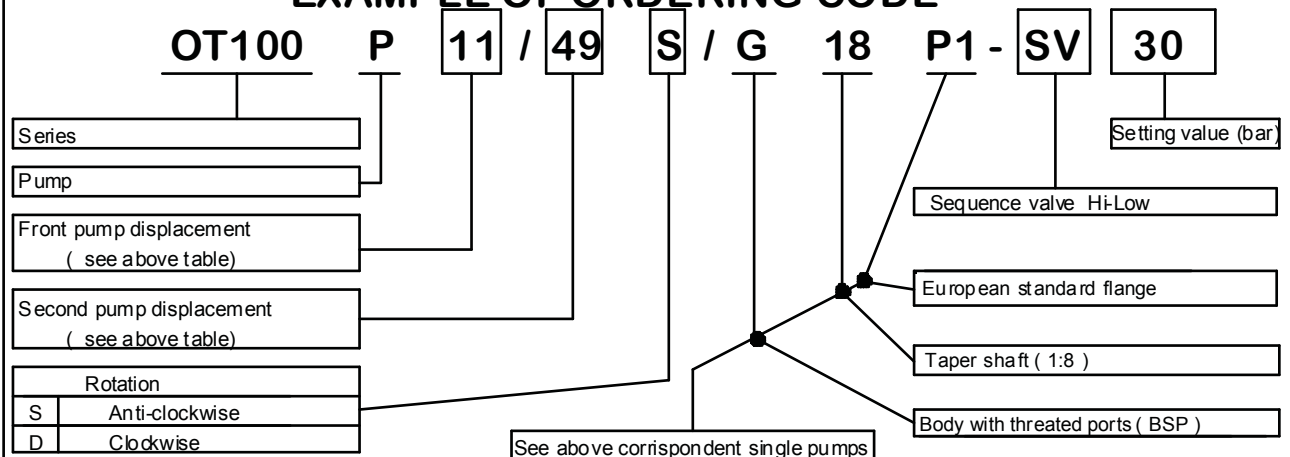
SECOND PUMP			
TIPO	P1	C	Cy
OT 100 P26	15/65	43	2.4
OT 100 P40	15/65	47.8	3.8
OT 100 P49	15/65	50.9	4.6
OT 100 P65	15/65	50.9	6.2

P1 = working pressure (bar)
P3 = peak pressure (bar)
Cy = displacement (cc/rev)

RANGE 15/25 bar (blue spring)
RANGE 25/65 bar (red spring)

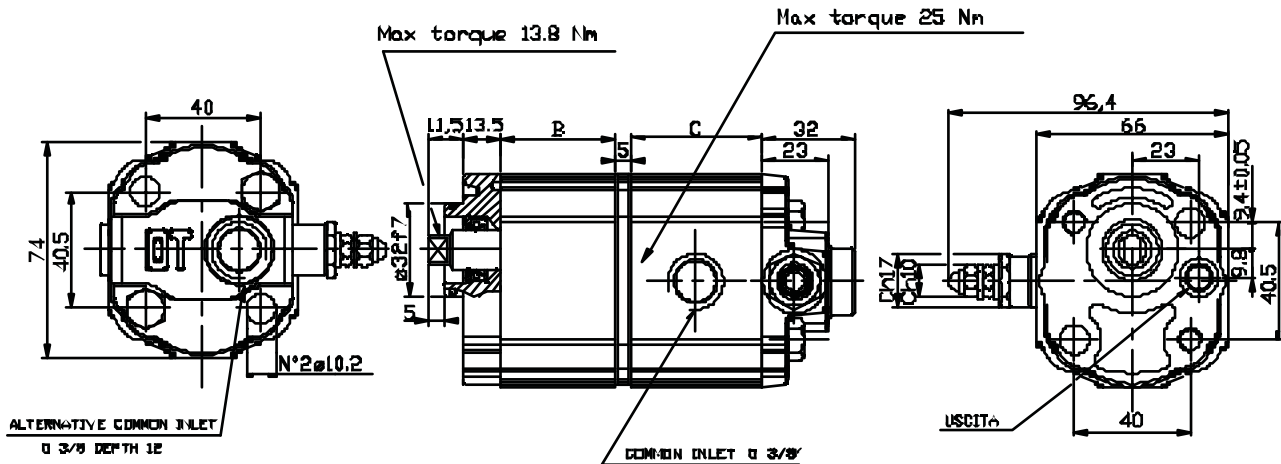


EXAMPLE OF ORDERING CODE



GROUP 1 PUMPS- WITH SEQUENCE VALVE HI-LOW

VERSION: N14 B2-VS

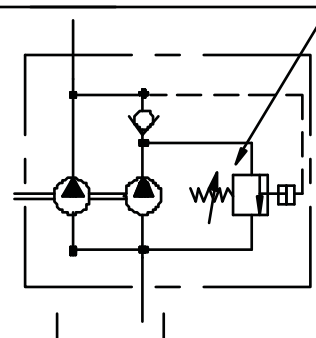


FRONT PUMP				
TIPO	P1	P3	B	Cy
OT 100 P11	240	280	37.8	1.05
OT 100 P16	260	300	39.5	1.45
OT 100 P20	260	300	40.9	1.80
OT 100 P26	260	300	43	2.45
OT 100 P32	260	300	40.9	3.05
OT 100 P40	260	300	43	3.80

SECOND PUMP			
TIPO	P1	C	Cy
OT 100 P26	15/55	43	2.4
OT 100 P40	15/55	47.8	3.8
OT 100 P49	15/55	50.9	4.6
OT 100 P65	15/55	50.9	6.2

P1 = work pressure (bar)
P3 = peak pressure (bar)
Cy = displacement (cc/rev)

RANGE 15/25 bar (blue spring)
RANGE 23/65 bar (red spring)



EXAMPLE OF ORDERING CODE

