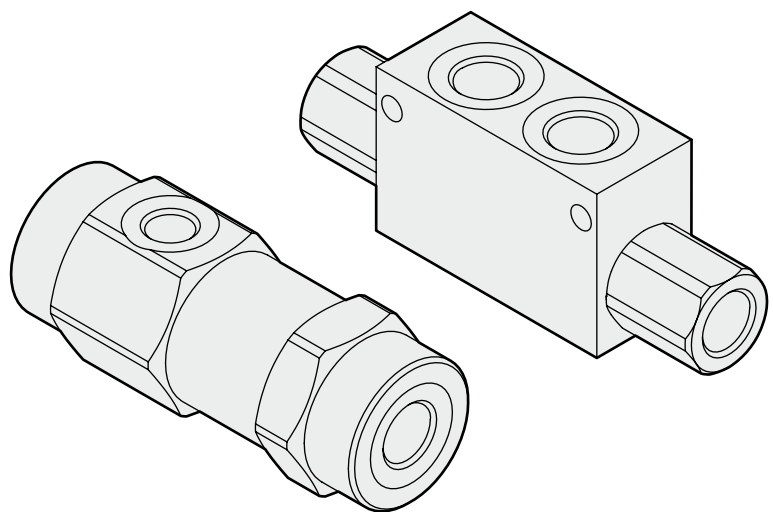
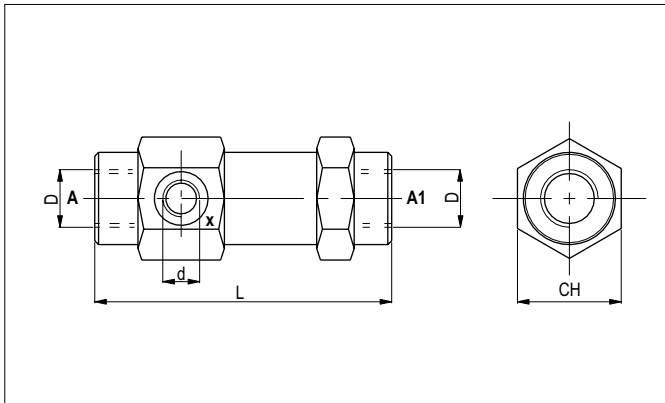


PILOT CHECK VALVES



SINGLE ACTING PILOTED CHECK VALVES - IN-LINE MOUNTING



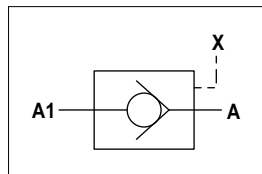
The pilot-operated check valve blocks a single-acting actuator in any position. Tapered poppet in tempered and ground steel, released by feeding the piloted opening X. Can be mounted in any position; galvanised.

HYDRAULIC FEATURES

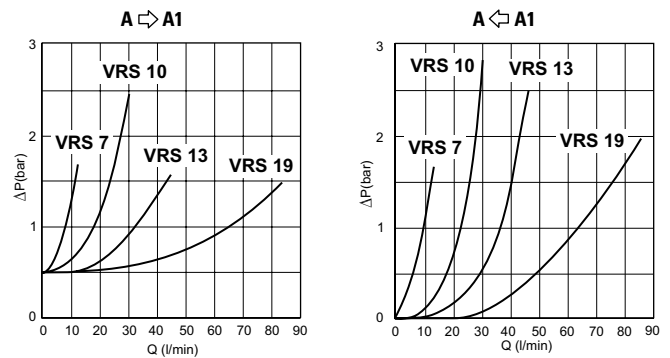
Max. opening pressure	350 bar
Standard opening pressure	0.5 bar
Max. Leakage (0 ÷ 20 drops/min)	0 ÷ 1 cm ³ /min
Piloting ratio	See table
Max. Flow	85 l/min
Hydraulic fluid	DIN 51524 Mineral oils
Fluid viscosity	2.8 ÷ 380 mm ² /s
Fluid temperature	-25°C ÷ 75°C
Ambient temperature	-25°C ÷ 60°C
Max. contamin. level class with filter	ISO 4406:1999 - class 19/17/14
Weight	See table

Code	Flow max (l/min)	Pressure max (bar)	L (mm)	Ch (mm)	Piloting ratio	d	D	Weight (kg)
VRS07	12	350	103	36	1:9	1/4 BSP	1/4 BSP	0.65
VRS10	30	310	109	40	1:6	1/4 BSP	3/8 BSP	0.82
VRS13	45	310	120	42	1:4.5	1/4 BSP	1/2 BSP	0.96
VRS19	85	300	131	55	1:3.7	1/4 BSP	3/4 BSP	1.95

HYDRAULIC SYMBOL

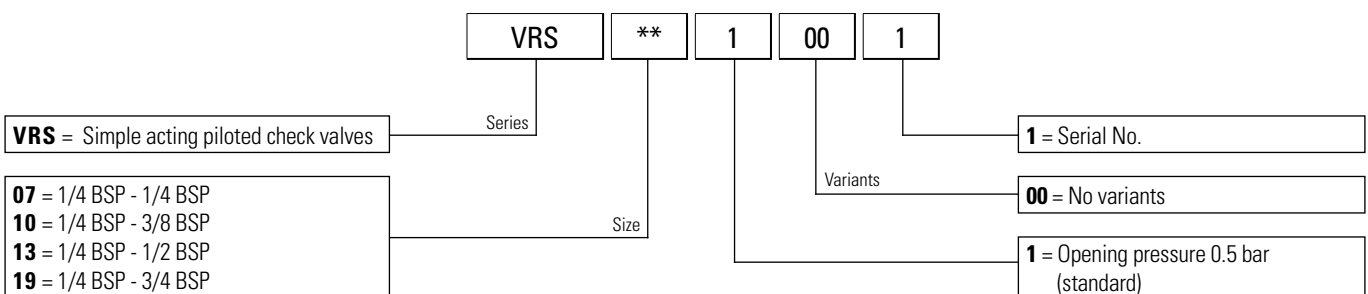


PRESSURE DROPS - FLOW

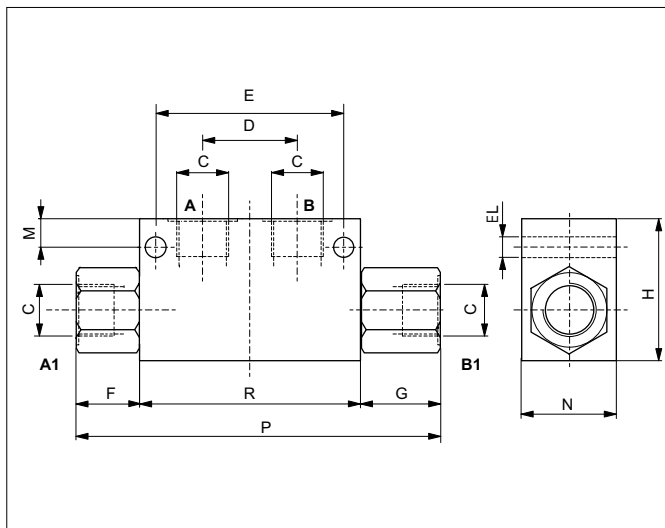


Fluid used: mineral based oil with viscosity 24 mm²/s at 50°C.

ORDERING CODE



SINGLE AND DOUBLE ACTING PILOT CHECK VALVES - IN-LINE MOUNTING



With the acting pilot check valves, a single or double acting actuator can be locked in any position.

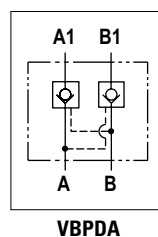
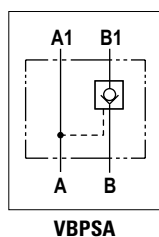
Sealing is guaranteed by tempered, ground, tapered steel poppets, releasing is by venting the piloted openings "A" and "B" according to the valve pilot ratio. The valves can be mounted in any position and are protected externally by a zinc plating.

HYDRAULIC FEATURES

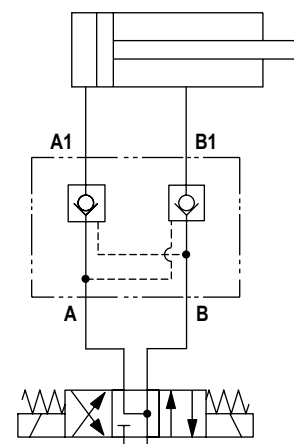
Max. Leakage (0 ÷ 5 drops/min)	0 ÷ 0.25 cm ³ /min
Hydraulic fluid	DIN 51524 Mineral oils
Fluid viscosity	10 ÷ 500 mm ² /s
Fluid temperature	-25°C ÷ 75°C
Ambient temperature	-25°C ÷ 60°C
Max. contamin. level class with filter	ISO 4406:1999 - class 19/17/14

Code	C	Flow max (l/min)	Pressure max (bar)	D (mm)	E (mm)	F (mm)	G (mm)	H (mm)	L (mm)	M (mm)	N (mm)	P (mm)	R (mm)	Weight (kg)	Pilot ratio
VBPSA0400	1/4 BSP	20	350	30	60	20	27	45	6.5	9	30	117	70	0.76	1:4
VBPSA0600	3/8 BSP	25	350	30	60	20	27	45	6.5	9	30	117	70	0.72	1:4
VBPSA0918	9/16-18 UNF	20	350	30	60	30.5	30.5	45	6.5	9	30	131	70	0.72	1:4
VBPSA0800	1/2 BSP	45	300	40	75	35	42	60	8	17	40	170	90	1.65	1:4
VBPSA1200	3/4 BSP	85	280	60	104	46	46	70	9	16	50	212	120	3.10	1:3.6
VBPSA0400	1/4 BSP	20	350	30	60	27	27	45	6.5	9	30	124	70	0.80	1:4
VBPSA0600	3/8 BSP	25	350	30	60	27	27	45	6.5	9	30	124	70	0.75	1:4
VBPSA0918	9/16-18 UNF	20	350	30	60	30.5	30.5	45	6.5	9	30	131	70	0.75	1:4
VBPSA0800	1/2 BSP	45	300	40	75	42	42	60	8	17	40	174	90	1.78	1:4
VBPSA1200	3/4 BSP	85	280	60	104	46	46	70	9	16	50	212	120	3.25	1:3.6

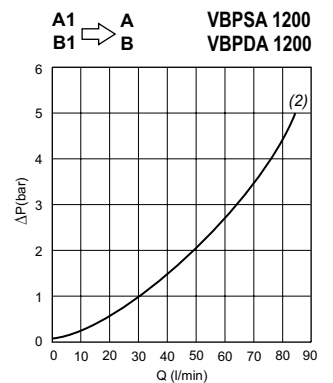
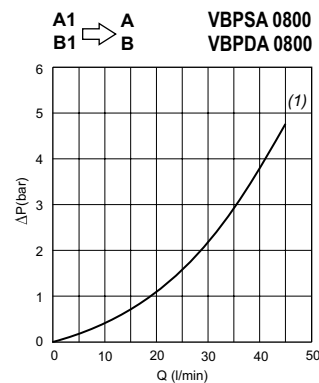
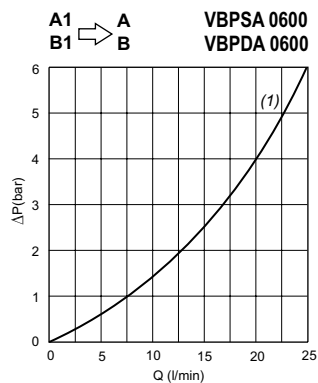
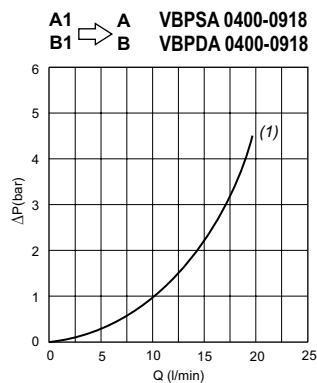
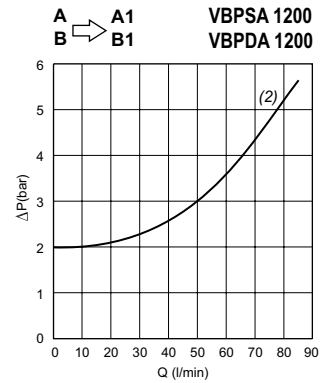
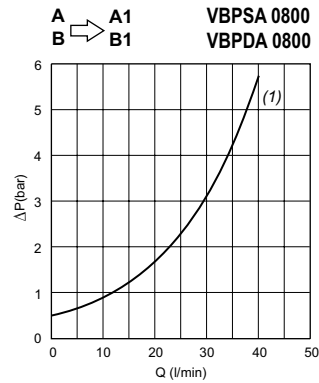
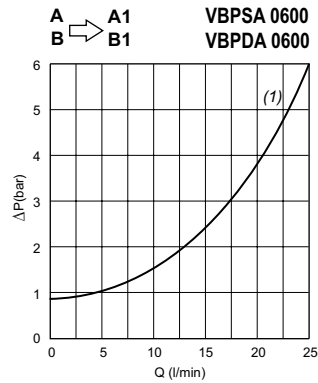
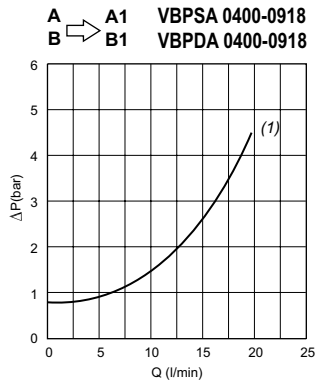
HYDRAULIC SYMBOLS



SERVICE EXAMPLE

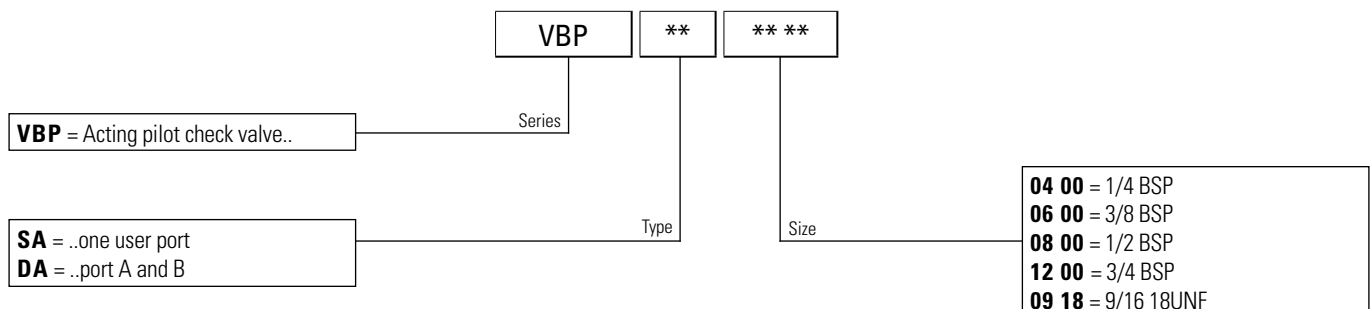


PRESSURE DROPS

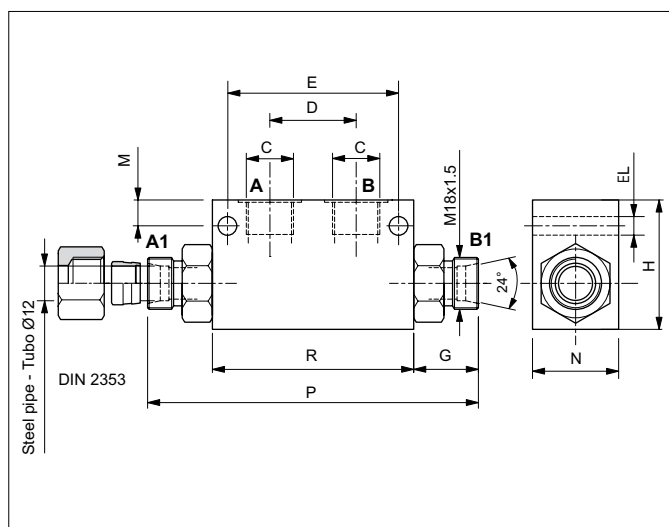


(1) Fluid used: mineral based oil with viscosity 15 mm²/s at 40°C.
 (2) Fluid used: mineral based oil with viscosity 24 mm²/s at 50°C.

ORDERING CODE



SINGLE AND DOUBLE ACTING PILOT CHECK VALVES-DIN 2353 PORTS - IN-LINE MOUNTING



With the acting pilot check valves, a single or double acting actuator can be locked in any position.

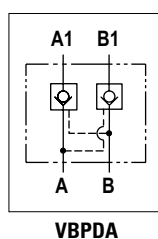
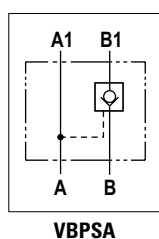
Sealing is guaranteed by tempered, ground, tapered steel poppets, releasing is by venting the piloted openings "A" and "B" according to the valve pilot ratio. The valves can be mounted in any position and are protected externally by a zinc plating.

HYDRAULIC FEATURES

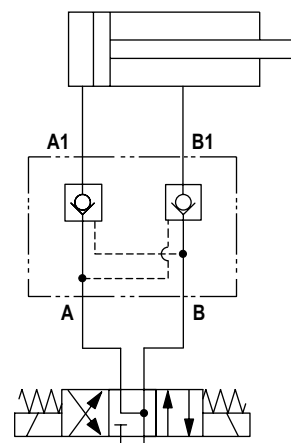
Max. Leakage (0 ÷ 5 drops/min)	0 ÷ 0.25 cm ³ /min
Hydraulic fluid	DIN 51524 Mineral oils
Fluid viscosity	10 ÷ 500 mm ² /s
Fluid temperature	-25°C ÷ 75°C
Ambient temperature	-25°C ÷ 60°C
Max. contamin. level class with filter	ISO 4406:1999 - class 19/17/14

Code	C	Flow max (l/min)	Pressure max (bar)	D (mm)	E (mm)	G (mm)	H (mm)	L (mm)	M (mm)	N (mm)	P (mm)	R (mm)	Weight (kg)	Pilot ratio
VBPSA0412	1/4 BSP	20	350	30	60	22.5	45	6.5	9	30	115	70	0.83	1:4
VBPSA0612	3/8 BSP	25	350	30	60	22.5	45	6.5	9	30	115	70	0.75	1:4
VBPDA0412	1/4 BSP	20	350	30	60	22.5	45	6.5	9	30	115	70	0.83	1:4
VBPDA0612	3/8 BSP	25	350	30	60	22.5	45	6.5	9	30	115	70	0.75	1:4

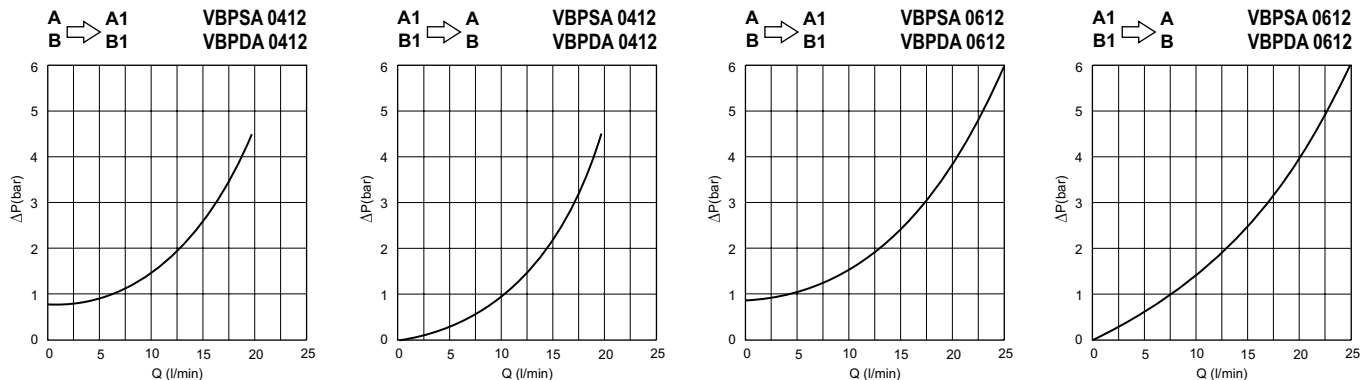
HYDRAULIC SYMBOLS



SERVICE EXAMPLE



PRESSURE DROPS



Fluid used: mineral based oil with viscosity 15 mm²/s at 40°C.

ACCESSORIES AND SPARE PARTS

	<p>Q51435044</p>	<p>Copper Washer</p>		<p>OD050612L</p>	<p>DIN Banjo</p>
	<p>RF05060000</p>	<p>Hollow screw</p>		<p>1: E341L12 2: E342L12</p>	<p>Nut (spare) Cutting ring (spare)</p>
	<p>OT0506T12</p>	<p>Banjo</p>		<p>Assembly example with steel pipe Ø 12 mm DIN 2353</p>	

ORDERING CODE

