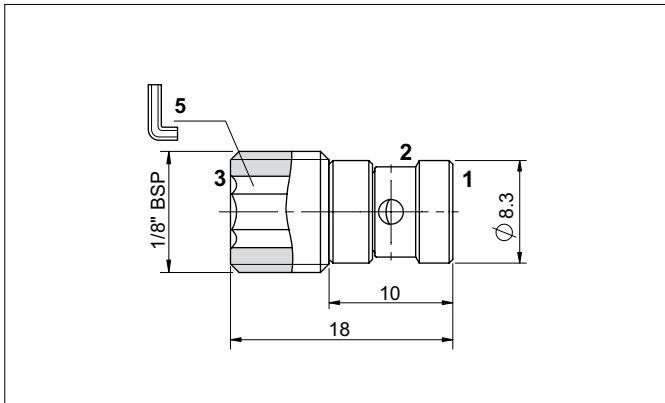


## SHUTTLE VALVES

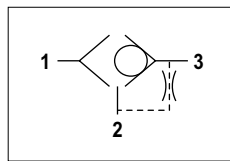


The shuttle type cartridge valves allow taking of the highest pressure signal to the external port via displacement of tempered and ground steel ball. There are usually employed to signal the actuator load to a load sensing pump pressure compensator. External steel body.

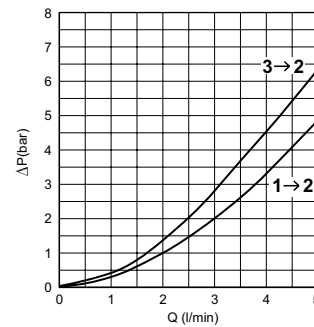
### HYDRAULIC FEATURES

|  |                                |
|--|--------------------------------|
| Max. opening pressure                  | 300 bar                        |
| Max. Flow                              | 5 l/min                        |
| Hydraulic fluid                        | DIN 51524 Mineral oils         |
| Fluid viscosity                        | 10 ÷ 500 mm <sup>2</sup> /s    |
| Fluid temperature                      | -25°C ÷ 75°C                   |
| Ambient temperature                    | -25°C ÷ 60°C                   |
| Max. contamin. level class with filter | ISO 4406:1999 - class 19/17/14 |
| Weight                                 | 0.007 kg                       |
| Tightening torque                      | 16 ÷ 18 Nm                     |
| Cavity (G 1/8)                         | CG001001 (See section 15)      |

### HYDRAULIC SYMBOL



### PRESSURE DROPS



Fluid used: mineral based oil with viscosity 46 mm<sup>2</sup>/s at 40°C.

### ORDERING CODE

