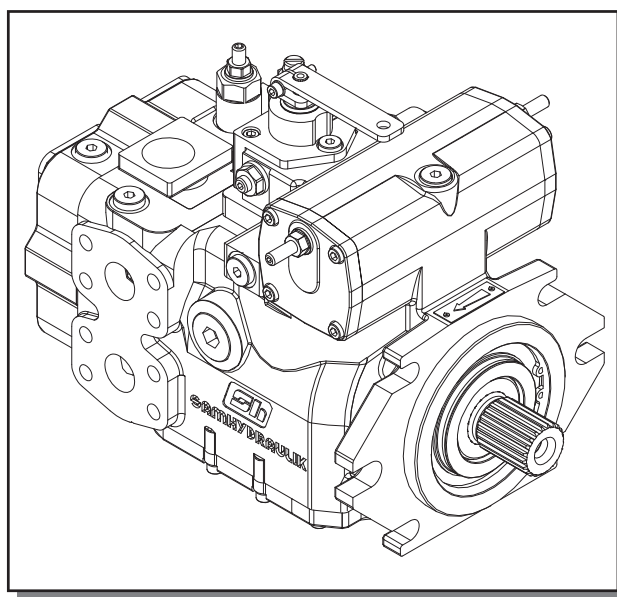


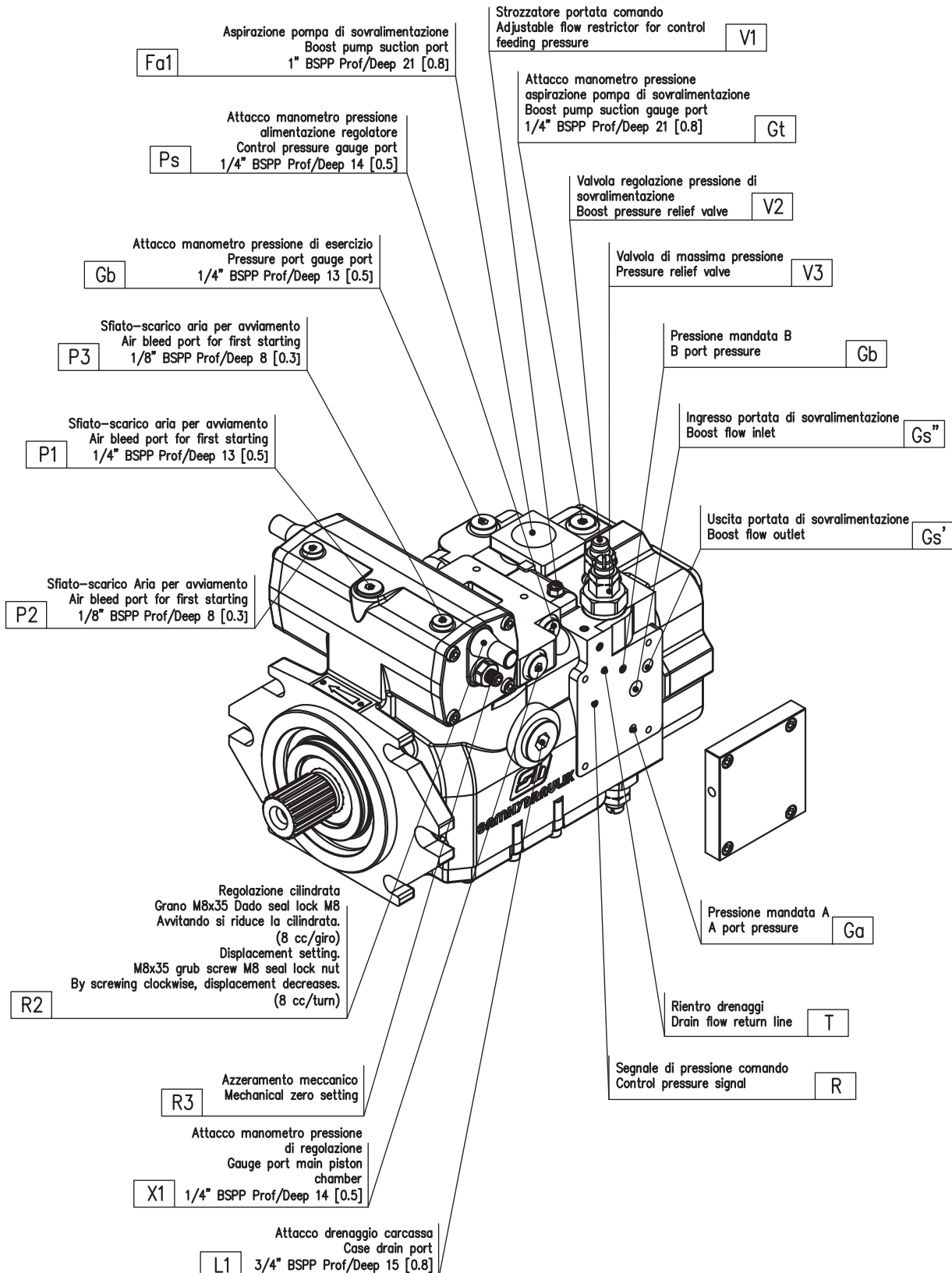
Pompa SH6V Pump



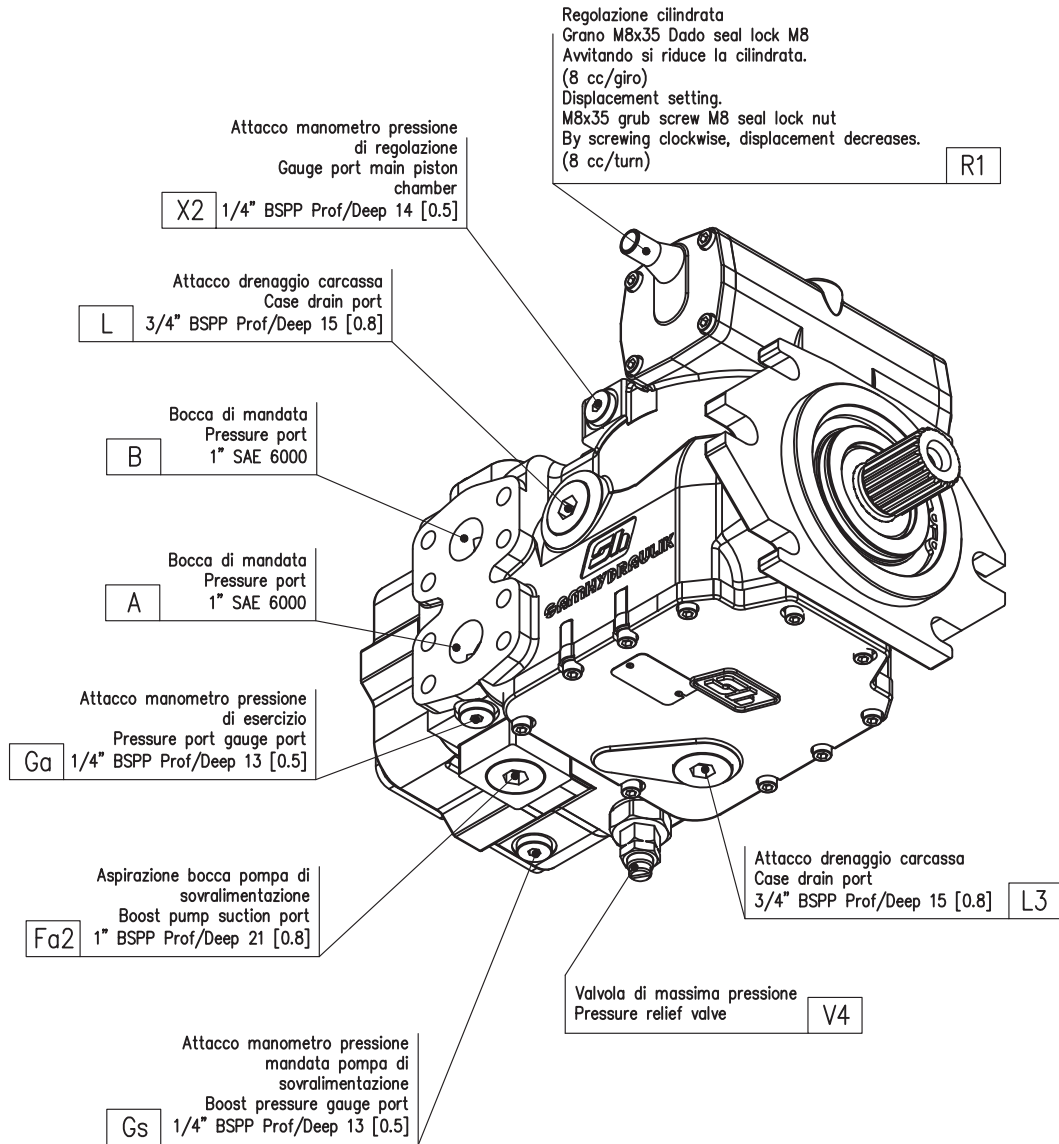
MANUALE DELL'OPERATORE

OPERATOR MANUAL

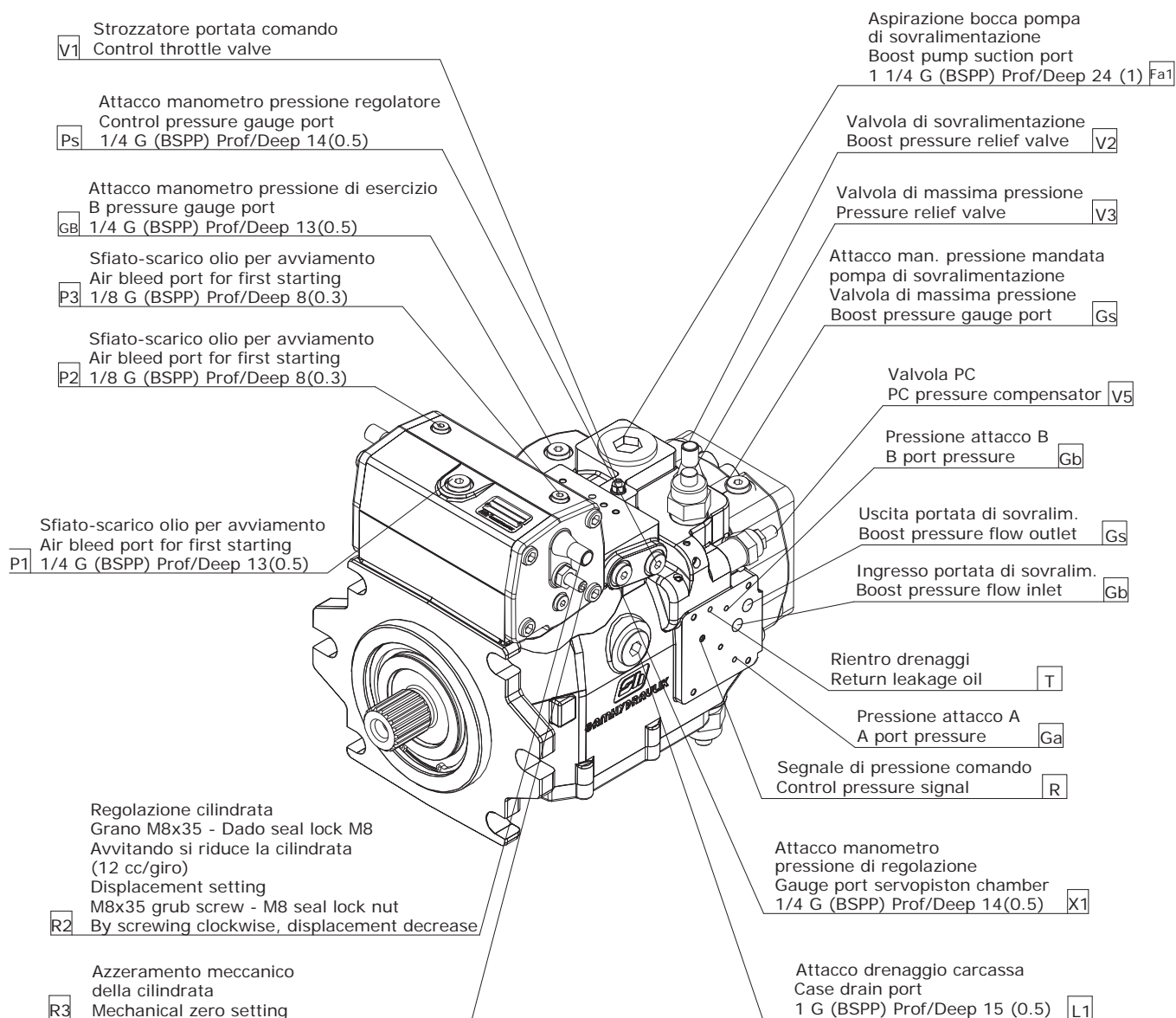
ATTACCHI SH6V 075 PORTS REFERENCE CHART



ATTACCHI SH6V 075 PORTS REFERENCE CHART



ATTACCHI SH6V 130 PORTS REFERENCE CHART



ATTACCHI SH6V 130 PORTS REFERENCE CHART

Regolazione cilindrata
Grano M8x35 - Dado seal lock M8
Avvitando si riduce la cilindrata
(12 cc/giro)
Displacement setting

R1 M8x35 grub screw - M8 seal lock nut
By screwing clockwise, displacement decrease

Attacco manometro
pressione di regolazione
Gauge port servopiston chamber
X2 1/4 G (BSPP) Prof/Deep 14(0.5)

Attacco drenaggio carcassa
Case drain port
L 1 G (BSPP) Prof/Deep 15 (0.5)

Linea di pressione
Pressure port
B 1 1/4 G (BSPP)

Linea di pressione
Pressure port
A 1 1/4 G (BSPP)

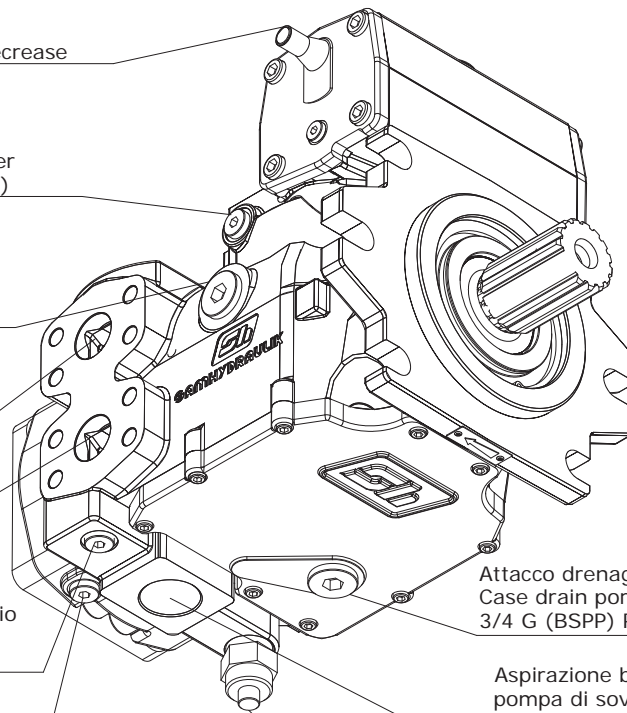
Attacco manometro pressione di esercizio
A pressure gauge port
GA 1/4 G (BSPP) Prof/Deep 13(0.5)

Attacco manometro pressione aspirazione
Section pressure gauge port
GT 1/4 G (BSPP) Prof/Deep 13 (0.5)

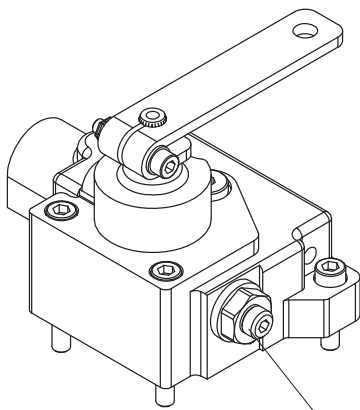
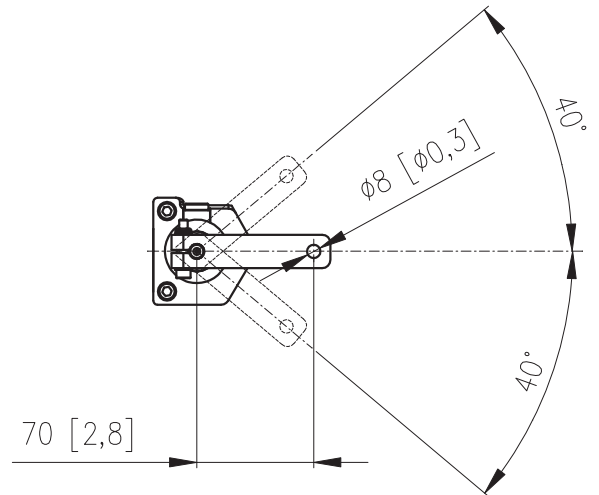
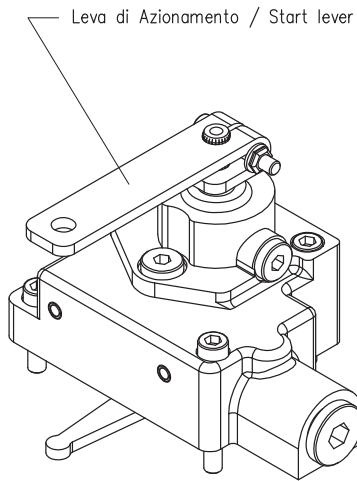
Attacco drenaggio carcassa
Case drain port
3/4 G (BSPP) Prof/Deep 15 (0.5) **L3**

Aspirazione bocca
pompa di sovralimentazione
Boost pump suction port
1 1/4 G (BSPP) Prof/Deep 24 (1) **Fa2**

Valvola di massima pressione
Pressure relief valve **V4**



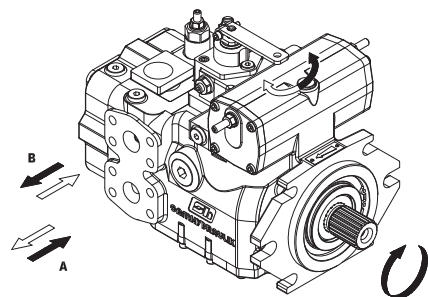
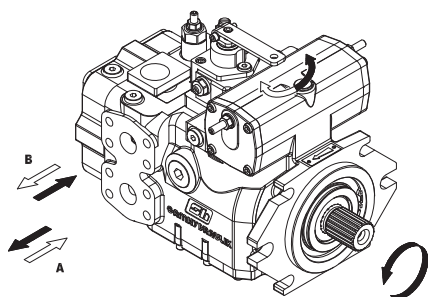
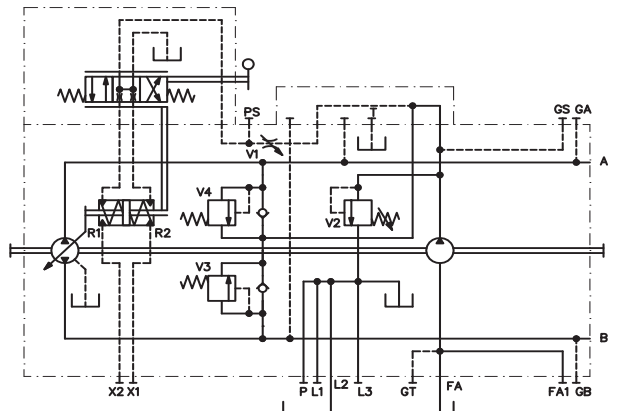
REGOLATORE MANUALE HLR - HLR MANUAL CONTROL



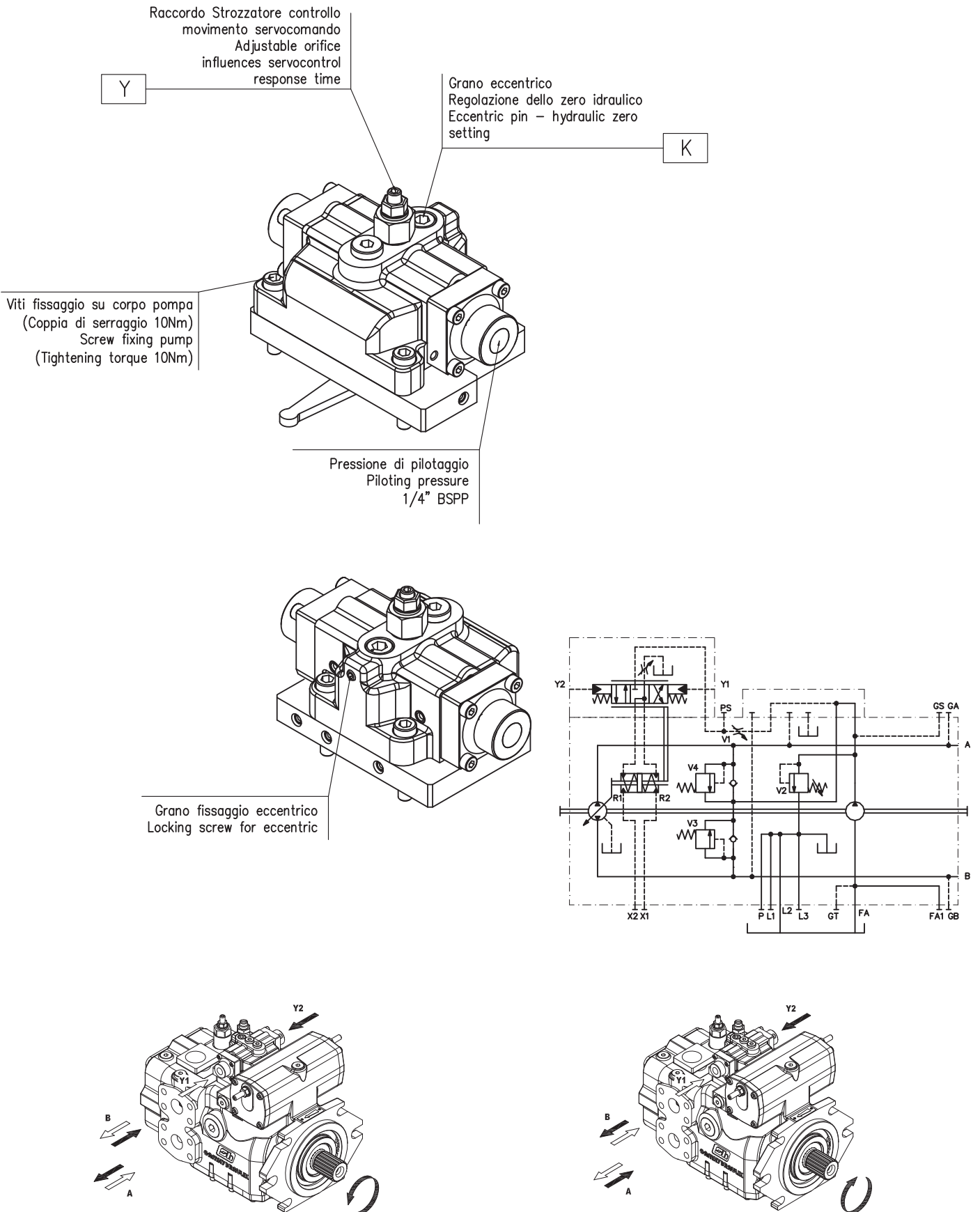
Grano per azzeramento idraulico / Screw for zero setting

La coppia necessaria da applicare alla leva di controllo è compresa tra 85 e 210 Ncm.

The torque necessary at the control lever is between 85 and 210 Ncm.



REGOLATORE IDRAULICO PROPORZIONALE HIR - HIR HYDRAULIC PROPORTIONAL CONTROL



REGOLATORE ELETTRICO PROPORZIONALE HER - HER ELECTRIC PROPORTIONAL CONTROL

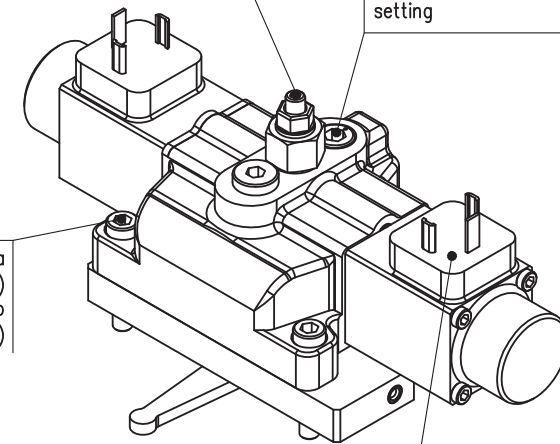
Raccordo Strozzatore controllo movimento servocomando
Adjustable orifice influences servocontrol response time

Y

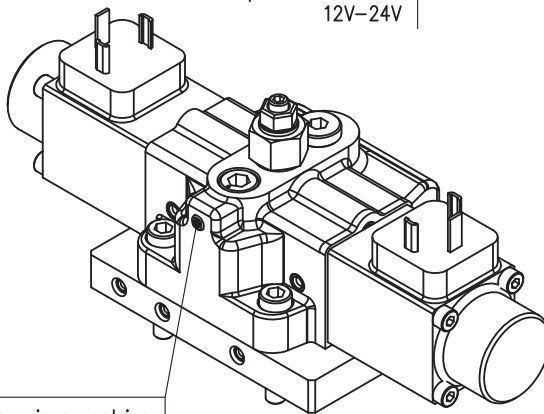
Grano eccentrico
Regolazione dello zero idraulico
Eccentric pin - hydraulic zero setting

K

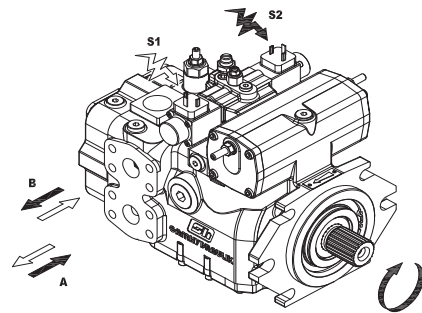
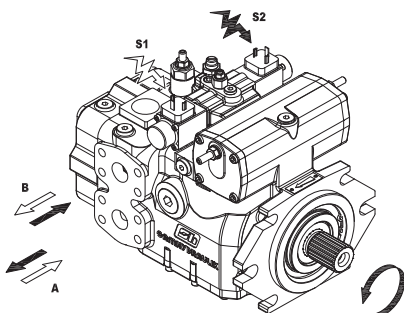
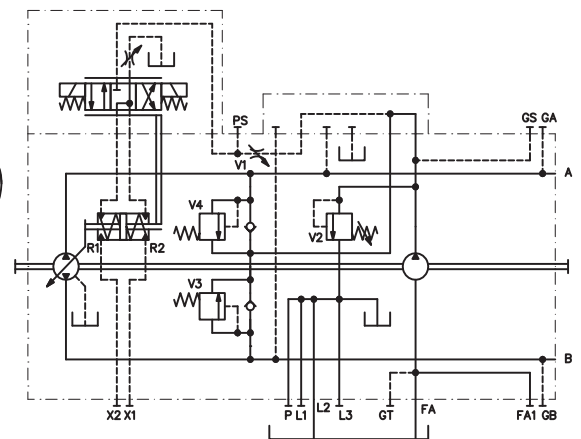
Viti fissaggio su corpo pompa
(Coppia di serraggio 10Nm)
Screw fixing pump
(Tightening torque 10Nm)



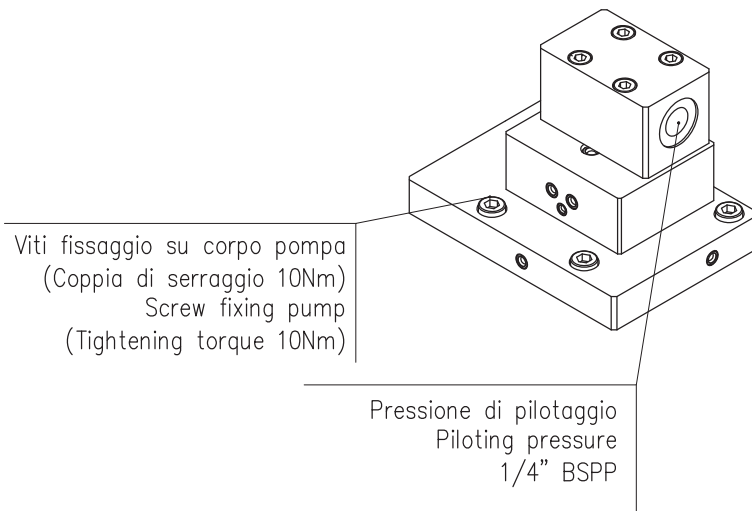
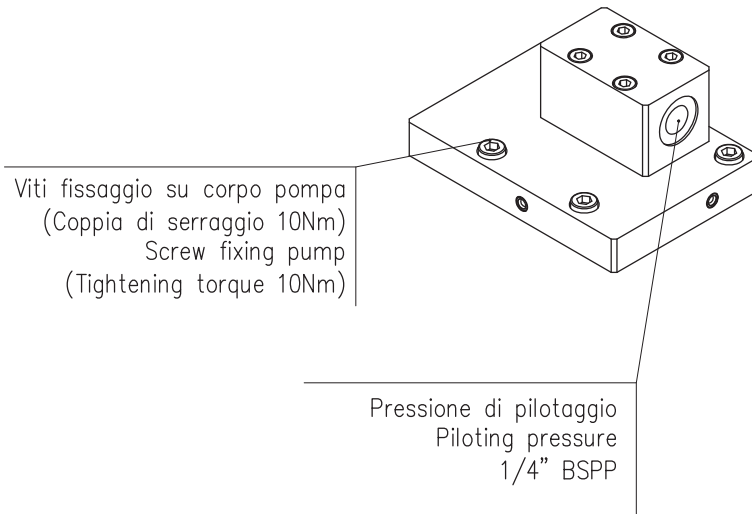
Elettromagneti proporzionali
12V-24V
Proportional solenoid
12V-24V



Grano fissaggio eccentrico
Screw for eccentric fixing

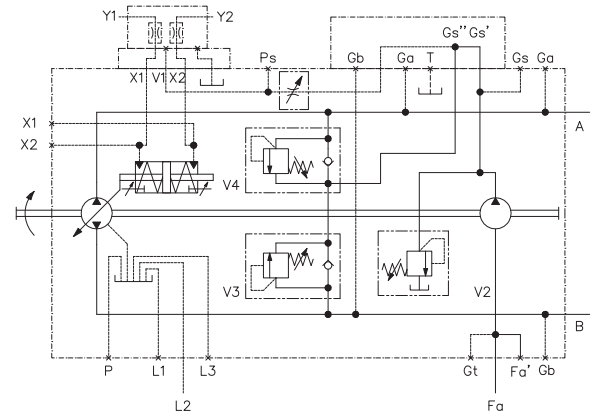


REGOLATORE IDRAULICO HIN - HIN HYDRAULIC CONTROL

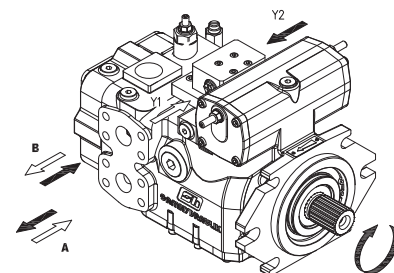
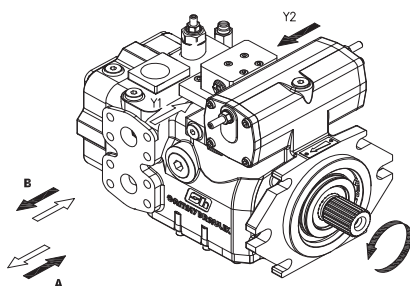
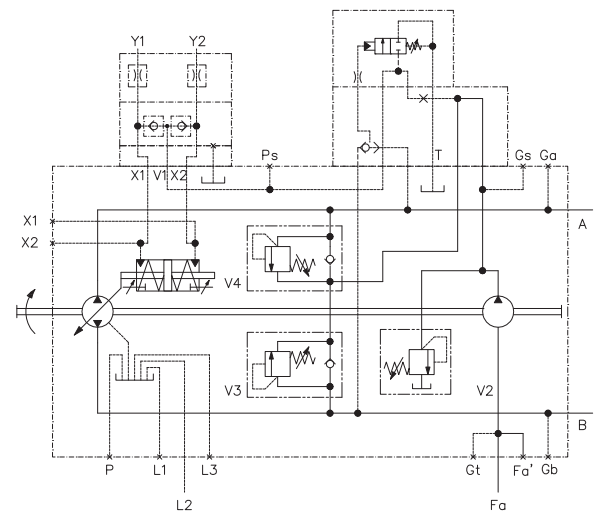


HIN

Disponibile solo per SH6V 075
Available only for SH6V 075



HIN (+PC)



Informazioni sul prodotto

Dati i continui sviluppi, le modifiche e le migliorie al prodotto, la S.A.M. Hydraulik Spa non sarà responsabile per eventuali informazioni che possano indurre in errore, od erronee, riportate da cataloghi, istruzioni, disegni, dati tecnici e altri dati forniti dalla S.A.M. Hydraulik Spa. Non sarà possibile basare alcun procedimento legale su tale materiale.

Modifiche del prodotto. La S.A.M. Hydraulik Spa si riserva il diritto di variare i suoi prodotti, anche quelli già ordinati, senza notifica.

Notice

Due to the continuous product developments, modifications and improvements S.A.M. Hydraulik Spa will not be held responsible for any erroneous information or data that may lead to errors, indicated in catalogues, instructions, drawings, technical data and other data supplied by S.A.M. Hydraulik Spa. Therefore, legal actions cannot be based on such material. **Product development.** S.A.M. Hydraulik Spa reserves the right to make changes to its products, even for those already ordered, without notice.

S.A.M. Hydraulik S.p.A.
Via Moscova, 10 - 42100 Reggio Emilia (ITALY)
Tel. +39-0522-270511
Fax. +39-0522-270460 - +39-0522-270470
e-mail: marketing@samhydraulik.com
web-site: <http://www.samhydraulik.com>